

THE
SHARPER
IMAGE

ONE YEAR LIMITED WARRANTY

SI PRODUCTS sells its products with the intent that they are free of defects in manufacture and workmanship for a period of one year from the date of original purchase, except as noted below. SI PRODUCTS warrants that its products will be free of defects in material and workmanship under normal use and service. This warranty extends only to consumers and does not extend to Retailers.

To obtain warranty service on your SI PRODUCTS product, mail the product and your dated sales receipt (as proof of purchase), postpaid, to the following address:

SI PRODUCTS Consumer Relations

Service Center Dept. 168

3000 Pontiac Trail

Commerce Township, MI 48390

No COD's will be accepted.

SI PRODUCTS does not authorize anyone, including, but not limited to, Retailers, the subsequent consumer purchaser of the product from a Retailer or remote purchasers, to obligate SI PRODUCTS in any way beyond the terms set forth herein. This warranty does not cover damage caused by misuse or abuse; accident; the attachment of any unauthorized accessory; alteration to the product; improper installation; unauthorized repairs or modifications; improper use of electrical/power supply; loss of power; dropped product; malfunction or damage of an operating part from failure to provide manufacturer's recommended maintenance; transportation damage; theft; neglect; vandalism; or environmental conditions; loss of use during the period the product is at a repair facility or otherwise awaiting parts or repair; or any other conditions whatsoever that are beyond the control of SI PRODUCTS.

This warranty is effective only if the product is purchased and operated in the country in which the product is purchased. A product that requires modifications or adoption to enable it to operate in any other country than the country for which it was designed, manufactured, approved and/or authorized, or repair of products damaged by these modifications is not covered under this warranty.

THE WARRANTY PROVIDED HEREIN SHALL BE THE SOLE AND EXCLUSIVE WARRANTY. THERE SHALL BE NO OTHER WARRANTIES EXPRESS OR IMPLIED INCLUDING ANY IMPLIED WARRANTY OF MERCHANTABILITY OR FITNESS OR ANY OTHER OBLIGATION ON THE PART OF THE COMPANY WITH RESPECT TO PRODUCTS COVERED BY THIS WARRANTY. SI PRODUCTS SHALL HAVE NO LIABILITY FOR ANY INCIDENTAL, CONSEQUENTIAL OR SPECIAL DAMAGES. IN NO EVENT SHALL THIS WARRANTY REQUIRE MORE THAN THE REPAIR OR REPLACEMENT OF ANY PART OR PARTS WHICH ARE FOUND TO BE DEFECTIVE WITHIN THE EFFECTIVE PERIOD OF THE WARRANTY.

NO REFUNDS WILL BE GIVEN. IF REPLACEMENT PARTS FOR DEFECTIVE MATERIALS ARE NOT AVAILABLE, SI PRODUCTS RESERVES THE RIGHT TO MAKE PRODUCT SUBSTITUTIONS IN LIEU

OF REPAIR OR REPLACEMENT.

This warranty does not extend to the purchase of opened, used, repaired, repackaged and/or resealed products, including but not limited to sale of such products on Internet auction sites and/or sales of such products by surplus or bulk resellers. Any and all warranties or guarantees shall immediately cease and terminate as to any products or parts thereof which are repaired, replaced, altered, or modified, without the prior express and written consent of SI PRODUCTS.

This warranty provides you with specific legal rights. You may have additional rights which may vary from state to state. Because of individual regulations, some of the above limitations and exclusions may not apply to you. For more information regarding our product line in the USA, please visit: www.siprducts.com

THE
SHARPER
IMAGE

Portable Charging Valet



SI Products
Service Center

1.888.856.6781
8:30a.m. – 7:00p.m. (EST)
M – F

Mail To: SI Products
Consumer Relations
Service Center Dept. 168
3000 Pontiac Trail
Commerce Township, MI
48390

e-mail:
cservice@siprducts.com

THE SHARPER IMAGE ® name and logo are registered trademarks.
Marketed and distributed by SI Products under license. ©The Sharper Image.
All rights reserved.

IB-CGC140

Instruction Manual and
Warranty Information

CG-C140

1 year
limited warranty

Charge all of your favorite devices without a tangle of wires.

Thank you for purchasing The Sharper Image® Portable Charging Valet. This product, along with the entire The Sharper Image® collection, connects innovation with cutting-edge design to provide you with years of dependability and enjoyment. Finally, the ultimate charging solution fit for your lifestyle has arrived. Now you can stay organized at home and on the go, effortlessly and stylishly, with an all-in-one charging system.

IMPORTANT SAFETY INSTRUCTIONS:

WHEN USING ELECTRICAL PRODUCTS, ESPECIALLY WHEN CHILDREN ARE PRESENT, BASIC SAFETY PRECAUTIONS SHOULD ALWAYS BE FOLLOWED, INCLUDING THE FOLLOWING:

READ ALL INSTRUCTIONS BEFORE USING

DANGER

- TO REDUCE THE RISK OF ELECTRIC SHOCK:

- Always unplug the appliance from the electrical outlet immediately after using and before cleaning.
- DO NOT reach for an appliance that has fallen into water. Unplug it immediately.
- DO NOT use while bathing or in the shower.
- DO NOT place or store appliance where it can fall or be pulled into a tub or sink.
- DO NOT place in or drop into water or other liquid.
- NEVER use pins or other metallic fasteners with this appliance.
- Keep dry - DO NOT operate in a wet or moist condition.

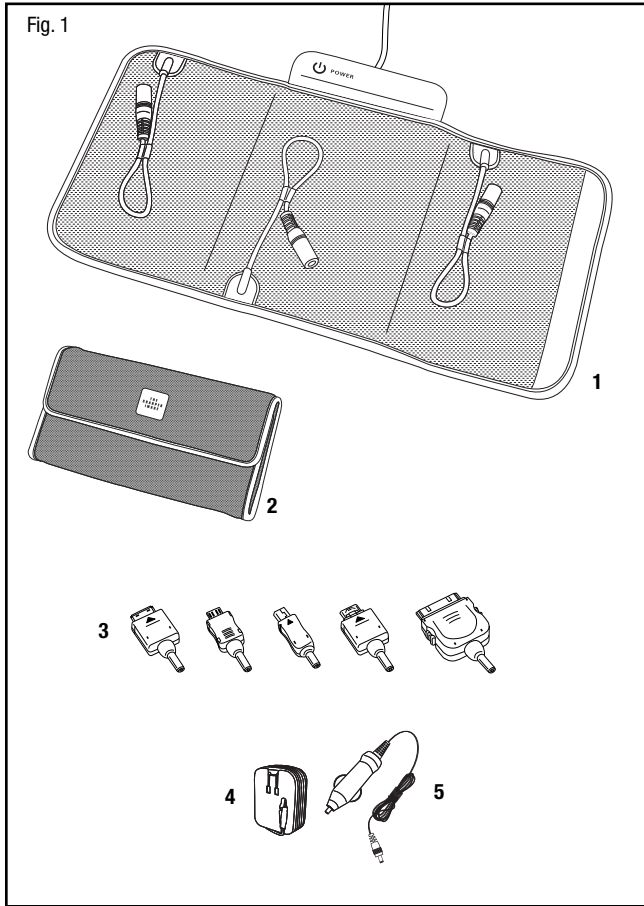
Caution: All servicing of this product must be performed by authorized SI Products Service Personnel only.

WARNING - TO REDUCE THE RISK OF BURNS, ELECTRIC SHOCK, FIRE OR INJURY TO PERSONS:

- An appliance should never be left unattended when plugged in. Unplug from outlet when not in use and before putting on or taking off parts or attachments.
- Close supervision is necessary when this appliance is used by, on or near children, invalids or disabled persons.
- Use this appliance only for its intended use as described in this manual. Do not use attachments not recommended by The Sharper Image®; specifically any attachments not provided with the unit.
- NEVER operate this appliance if it has a damaged cord or plug, if it is not working properly, if it has been dropped or damaged, or dropped into water. Return it to SI Products Service Center for examination and repair.
- Keep cord away from heated surfaces.
- NEVER drop or insert any object into any opening.
- DO NOT operate where aerosol (spray) products are being used or where oxygen is being administered.
- DO NOT operate under a blanket or pillow. Excessive heating can occur and cause fire, electric shock or injury to persons.
- DO NOT carry this appliance by the power cord or use cord as handle.
- To disconnect, turn all controls to the "off" position, then remove plug from outlet.
- This appliance is designed for personal, non-professional use only.
- DO NOT use outdoors.

Caution – Please read all instructions carefully before operating.

SAVE THESE INSTRUCTIONS



Main Features:

- Charges up to three devices at one time using only one electrical cord and outlet
- Includes five of the most popular tips: Apple, Mini USB, Micro USB, LG, and Samsung
- Charges your favorite handheld devices: cellphone, iPod, iPhone, PDA, Bluetooth Headset, portable games, some digital cameras, and more.
- Folds up into compact footprint and fits into convenient travel storage case (included)
- Non-slip surface backing provides stable placement for devices
- Includes AC Adaptor for standard 120V outlets and DC Adaptor (12V) for in-car use

Getting Started

Inside the box you will find (Fig. 1):

1. Charging Valet
2. Travel Storage Case
3. Five of the most popular tips: Apple, Mini USB, Micro USB, LG, Samsung
4. AC Adaptor
5. DC Adaptor (12V) for in-car use
6. User Guide

PLEASE NOTE: Additional adaptor tips are available for purchase from siproducts.com website. See the enclosed TIPS ORDERING sheet for all details

Charging your mobile devices:

To meet your mobile needs, the Portable Charging Valet comes with five of the most popular adaptor tips: Apple, Mini USB, Micro USB, LG, and Samsung. You may charge up to three devices at one time.

Note: Do not force. Carefully connect each mobile device to its appropriate tip.

WARNING: USE CORRECT TIP ONLY FOR EACH MOBILE DEVICE. ATTEMPTING TO ATTACH OR FORCE ANY NON-APPLE, NON-MINI, NON-MICRO, NON-LG OR NON-SAMSUNG DEVICE INTO THE INCORRECT CONNECTORS WILL **DAMAGE AND EVEN DESTROY YOUR DEVICE.**

1. Select correct tip and attach to adaptor cord connected to charging valet, making sure that connection is secure.(Fig. 1)
2. Choose either the AC adaptor to plug into a 120V power outlet – or the DC adaptor (12V) for your car. Plug the other end of the adaptor into the valet at the power base. (Fig. 1)
3. There is no charge indicator on the charging valet itself. See battery progression on your mobile device.
4. Unplug device from tip when charging is complete. The tip may be left on adaptor cord or stored in the case.
5. Unplug from AC or DC power source when charging valet is not in use.
6. Store in travel storage case to stay organized.

Maintenance

To Store

You may leave the unit on display, or you can store it in its box in a cool, dry place.

To Clean

Use only a soft dry cloth to clean the enclosure of the unit.

NEVER use liquids or abrasive cleaner to clean.

Modifications not authorized by the manufacturer may void user warranty.

Note: This equipment has been tested and found to comply with the limits for a Class B digital device, pursuant to Part 15 of the FCC Rules. These limits are designed to provide reasonable protection against harmful interference in a residential installation. This equipment generates, uses and can radiate radio frequency energy and, if not installed and used in accordance with the instructions, may cause harmful interference to radio communications. However, there is no guarantee that interference will not occur in a particular installation. If this equipment does cause harmful interference to radio or television reception, which can be determined by turning the equipment off and on, the user is encouraged to try to correct the interference by one or more of the following measures:

- Reorient or relocate the receiving antenna.
- Increase the separation between the equipment and receiver.
- Connect the equipment into an outlet on a circuit different from that to which the receiver is connected.
- Consult the dealer or an experienced radio/TV technician for help.